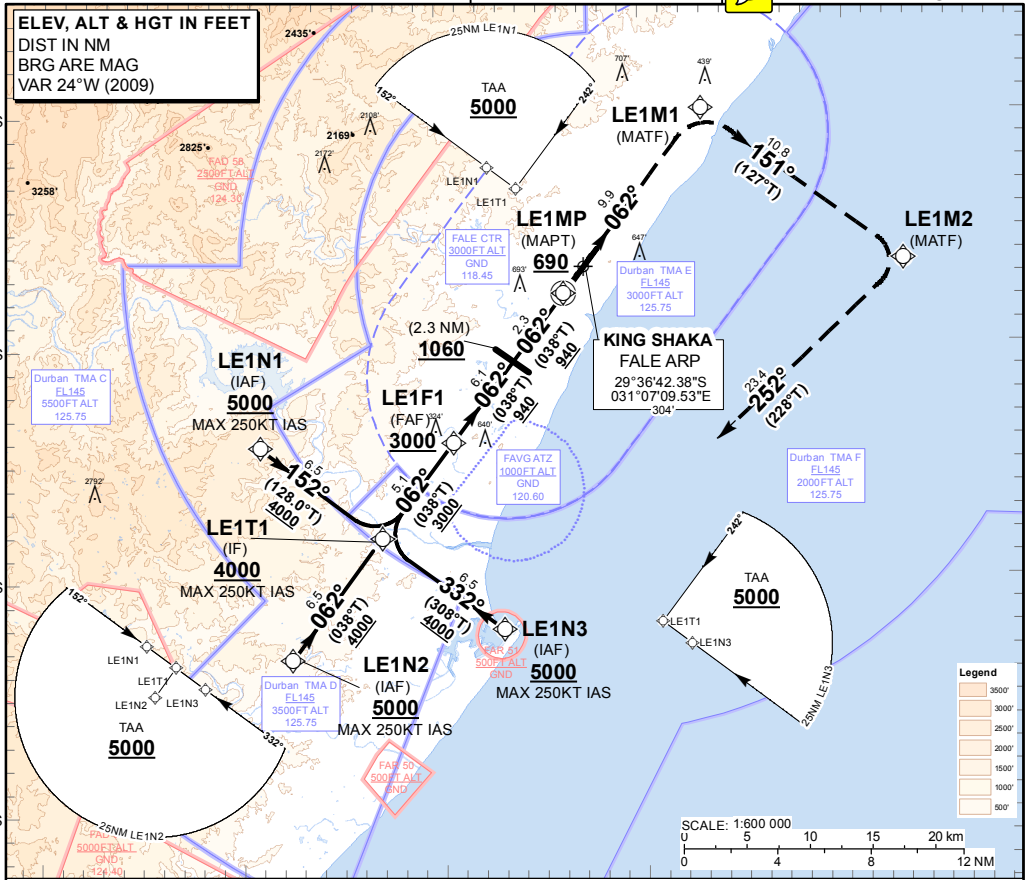
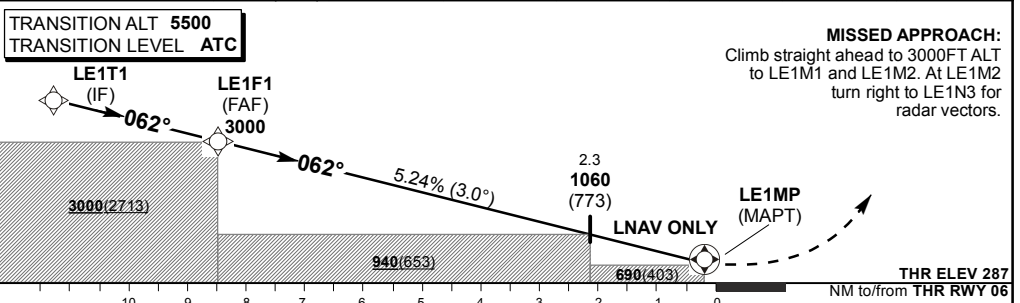




**ELEV, ALT & HGT IN FEET
DIST IN NM
BRG ARE MAG
VAR 24°W (2009)**



	30°40'E	30°50'E	31°0'E	31°10'E	31°20'E	
DIST (NM) to LE1MP	7	6	5	4	3	2
ADVISORY ALT(HGT)	2680 (2393)	2350 (2063)	2020 (1733)	1680 (1393)	1350 (1063)	1010 (723)



Straight-in Approach	With 3.9% Missed APCH Gradient	690 (403)	690 (403)	690 (403)	690(403)	GS	KT	80	100	120	140	160
	With 2.5% Missed APCH Gradient	1220 (933)	1220 (933)	1220 (933)	1220 (933)	LE1F1 to LE1MP	M:S	6:16	5:01	4:11	3:35	3:08
	RVR	1200m	1400m	1400m	1800m	Rate of descent	FPM	120	140	160	180	200
	ALS OUT	1500m	1500m	2000m	2000m	GS	KT	474	553	632	711	790
	Circling	960 (656)	990 (686)	1170 (866)	1440(1136)	3.9% Missed APCH Climb Gradient	M:S	474	553	632	711	790

NOTE:
1. Minimum 3.9% Missed Approach Climb Gradient required to cross the CTR BDY at 3000 ALT or above.

CHANGE: Circling minima